

Osmium Plasma Coater



The ultimate conductive coating
for your FESEM samples
just a click away... 2spi.com/opc



SPI Supplies Division of **STRUCTURE PROBE, Inc.**

P.O. Box 656 • West Chester, PA 19381-0656 USA
Phone: 1-610-436-5400 • 1-800-2424-SPI (USA and Canada) • Fax: 1-610-436-5755 • 2spi.com • E-mail: sales@2spi.com



SPI Supplies Osmium Plasma Coater

The OPC line of osmium plasma coaters are designed to provide thin, amorphous layers of conductive osmium metal.

Benefits of Osmium Coatings:

- Excellent thermal conductivity
- Amorphous structure (no grain size!)
- Will not oxidize
- Coatings as thin as 1nm
- No heat generated during the coating process

System Specifications:

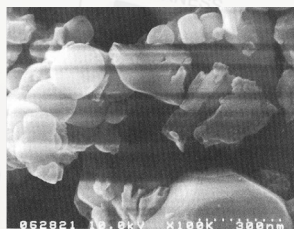
- Available with either a 60mm or 80mm chamber
- All valves have safety interlocks
- Pneumatically actuated vacuum valves
- Size: 19" W x 16" D x 16" H
(48 cm W x 42 cm D x 41 cm H)
- Weight: 80 lbs (136Kg)

System Includes:

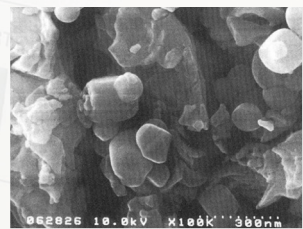
- Main coater unit
- Start-up consumables kit
- Stainless steel vacuum hose
- All tools needed for set up and assembly

Site Requirements:

- Vacuum pump capable of at least 140 L/min
- Electrical Power: 100/110 V, 50/60 Hz, 10 A
or 220/240 V, 50 Hz, 5 A



Barium Titanate coated
with 3nm of Pt/Pd



Barium Titanate coated
with 3nm of Osmium