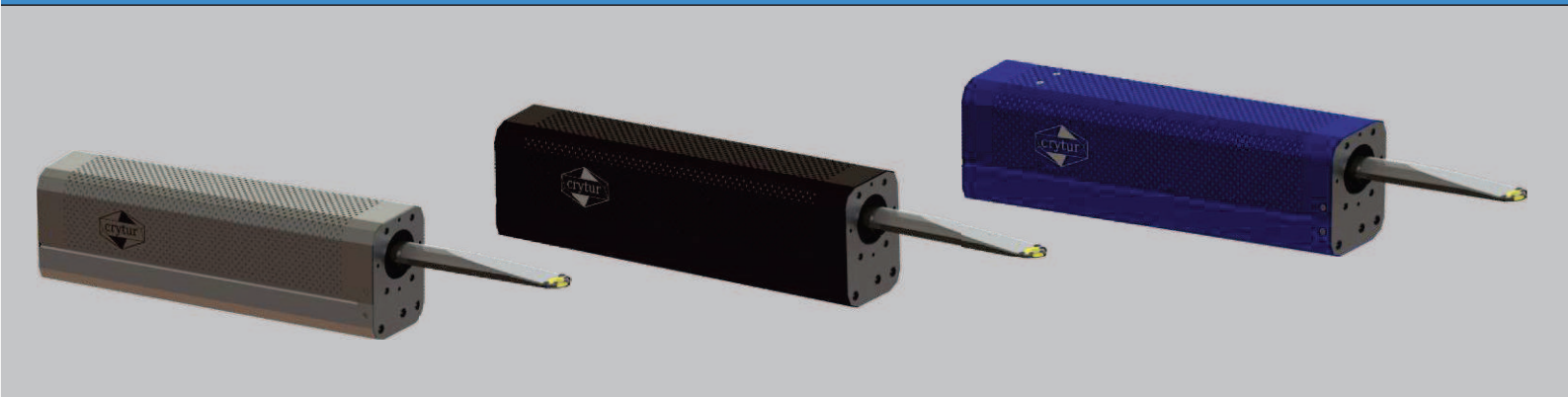
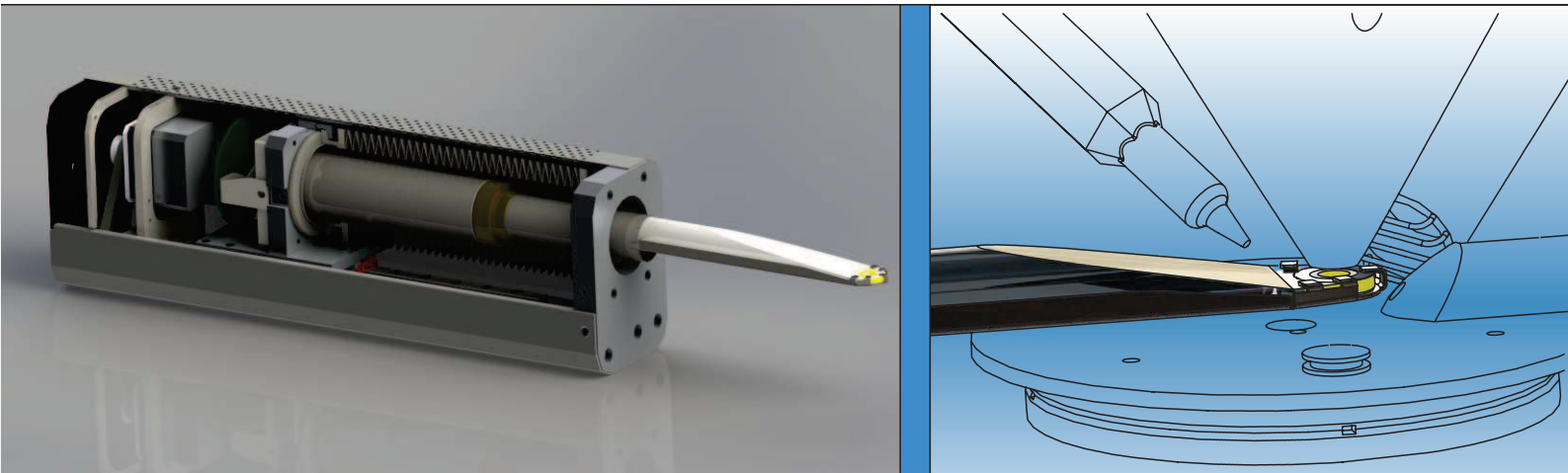




# REBEKA

## Retractable BSE detector for SEM

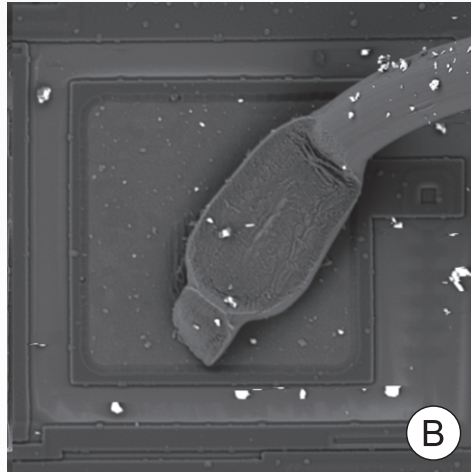
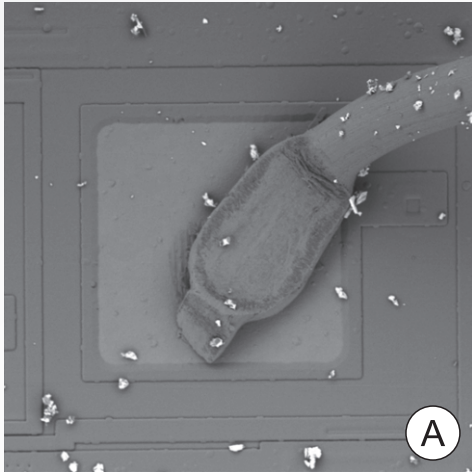


## RELIABLE SENSOR & PRECISE MECHANICS

- ✓ Single crystal YAG:Ce sensor
- ✓ Scintillator/PMT principle for ultimate image quality
- ✓ Exclusive CRYTUR LOW-ENERGY COATING™ sensitive down to 0.5 keV
- ✓ Excellent S/N ratio
- ✓ Unlimited sensor lifetime
- ✓ HV + LV + ESEM operation

- ✓ Motorized retraction mechanism
- ✓ Bellows-sealed system
- ✓ Retraction 145 mm
- ✓ Compact design
- ✓ Precise alignment
- ✓ Customized connection to SEM

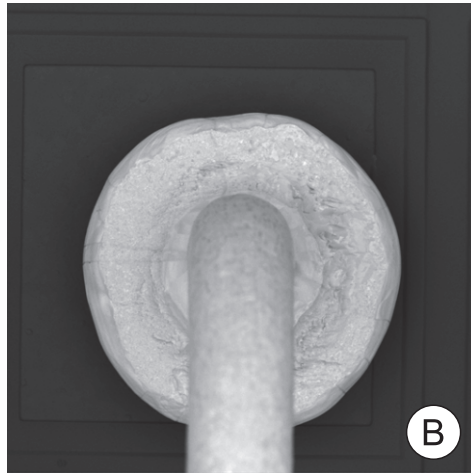
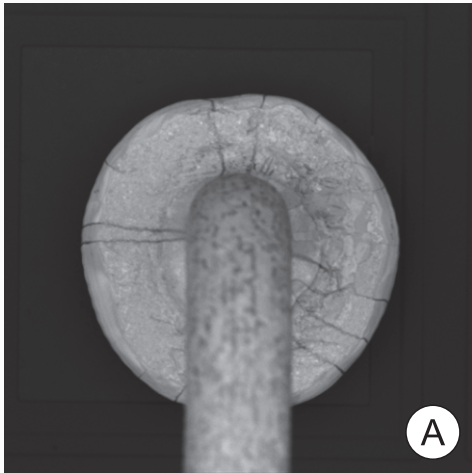
# IMAGES ACQUIRED WITH REBEKA



Sample: **IC bonds - Al bond on Si wafer with particle contamination**

Different BSE contrast at various landing energies, the same FOV

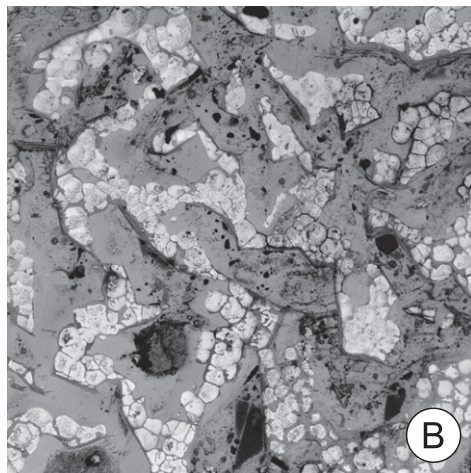
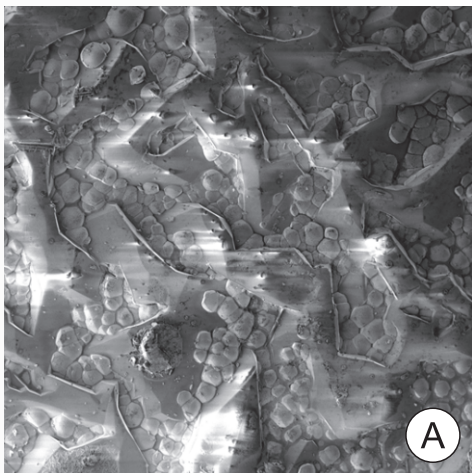
- (A) BSE 3kV | 80pA | 320 $\mu$ s/pxl
- (B) BSE 10kV | 350pA | 100 $\mu$ s/pxl



Sample: **IC bonds - Au bond on metallized Si wafer**

BSE imaging at low beam current, the same FOV

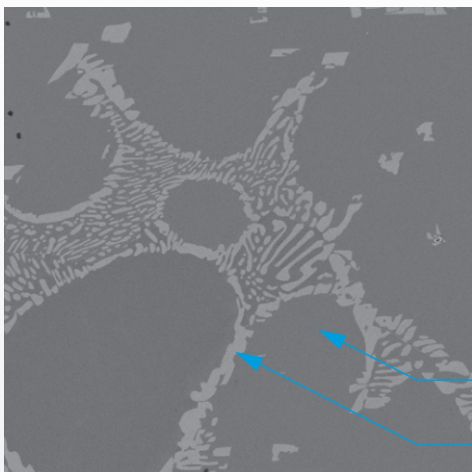
- (A) BSE 2kV | 20pA | 320 $\mu$ s/pxl
- (B) BSE 5kV | 20pA | 100 $\mu$ s/pxl



Sample: **phases of  $\text{Lu}_2\text{O}_3$ ,  $\text{Lu}_3\text{Al}_5\text{O}_{12}$  and  $\text{Zr}_2\text{O}$**

BSE imaging at low landing energy on insulating samples, the same FOV

- (A) SE 3kV | 80pA | 100 $\mu$ s/pxl
- (B) BSE 3kV | 80pA | 100 $\mu$ s/pxl



Sample: **Fe-Al-Nb alloy**

BSE | 10kV | 100pA | 100 $\mu$ s/pxl

**Fe-25Al-0.25Nb**

**Fe-20.8Al-27.1Nb**

## Contact us

### SPI Supplies

206 Garfield Ave  
West Chester, PA 19380-4512  
USA

Phone: 1-(610)-436-5400  
1-(800)-242-4774

FAX: 1-(610)-436-5755

Website: [2spi.com](http://2spi.com)