

# SPI Supplies® Grids



Select from the largest variety of grids anywhere...  
just a click away... [2spi.com](http://2spi.com)



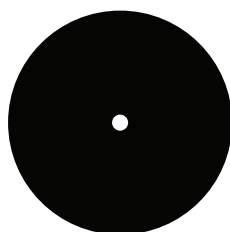
**SPI Supplies** Division of **STRUCTURE PROBE, Inc.**

P.O. Box 656 • West Chester, PA 19381-0656 USA  
Phone: 1-610-436-5400 • 1-800-2424-SPI (USA and Canada) • Fax: 1-610-436-5755 • [2spi.com](http://2spi.com) • E-mail: [sales@2spi.com](mailto:sales@2spi.com)



## SPI Supplies® stocks the most complete selection of the highest-quality grids available today.

A new user, when confronted with the huge selection of grid possibilities, can find the experience to be almost overwhelming and that is why we offer help for the new user to help decide which grids they should be selecting. Below is selection of the many types of grids available. Most types come in a variety of choices and a selection of different alloys. (Copper, Nickel, Gold, Copper/Palladium, Gold Plated Copper and Gold Plated Nickel).



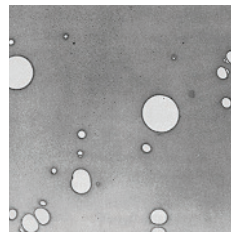
**Aperature grids** allow the microscopist to see a complete section without grid bar interruption. Smooth edges with excellent dull/shiny side discrimination.



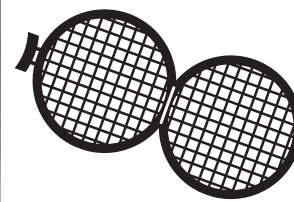
**Calibrated grids** are needed primarily by those doing work that must conform to the AHERA specifications.



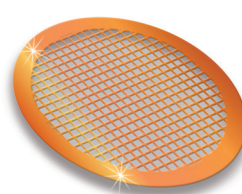
**Ceramic Grids and Discs** are a nanostructured alumina ceramic material (aluminum oxide) that are produced using a microfabrication process. They provide an alternative when other materials may be unsuitable.



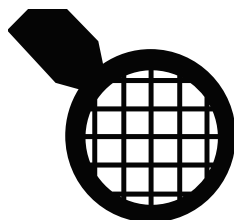
**Coated grids for TEM** support films including Formvar, carbon and silicon dioxide are all custom made. Above: Custom coated holey Formvar®.



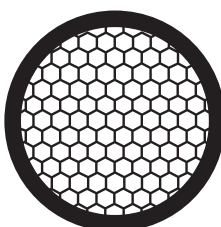
**Folding grids** are used for securing samples that tend to curl up or fly off in the presence of the electron beam.



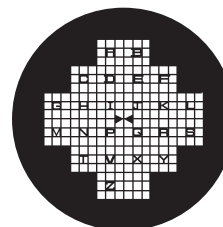
**Graphene Coated grids** use a unique patented CVD process. Graphene films are clean and uniform. We currently offer graphene as support films on TEM grids or on copper substrates



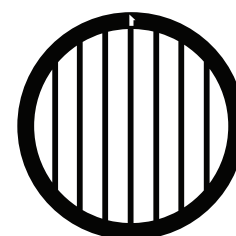
**Handle grids** are easier to pick up and manipulate and, therefore, reduce the risk of contamination and breaking of the support film.



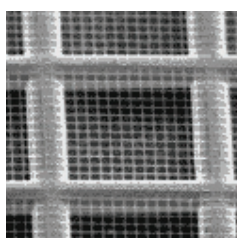
**Hexagonal grids** allow you to take sequential micrographs without interference from grid bars.



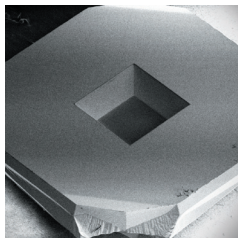
**Index grids** are used by microscopists who want to be able to return, at a later time, to the same identical grid square, to examine a previously examined feature, or perhaps even by a different person.



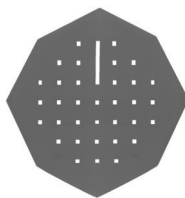
**Parallel grids** allow you to take sequential micrographs without interference from grid bars.



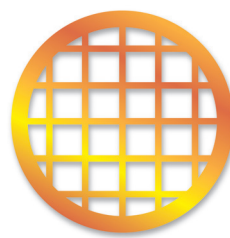
**Quantifoil holey film** facilitates the use of automation in TEM, something that with conventional carbon films would probably not be possible.



**Silicon Membrane Window grids** are a highly innovative approach using electronics grade {100} orientation silicon wafers with a thin film of  $\text{Si}_3\text{N}_4$  deposited to the desired thickness.



**Smart grids** are a new revolutionary tool for enhanced visualization at the nanoscale. By creating a functionalized surface, the grid surface itself now becomes part of the sample preparation process.



**Square mesh grids**, the largest supply of square mesh grids, regular and slim-bar in all alloys or material types. (Cu, Ni, Au, Pd, Al, Ti, SS, Mo and Be)



**Lift-Out / Half Grids**  
Other specialty grids for FIB, ion milling, other preparation technically grids.



The complete source for all your microscopy needs...  
[2spi.com](http://2spi.com)